


RESEARCH ARTICLE

Open Access



# Pretreatment visceral metastases in castration resistant metastatic prostate cancer: role in prediction versus actual site of disease progression

Kathleen Ruchalski<sup>1\*</sup> , Hyun J. Kim<sup>1,2</sup>, Michael Douek<sup>1</sup>, Steven Raman<sup>1</sup>, Maitraya Patel<sup>1</sup>, Victor Sai<sup>1</sup>, Antonio Gutierrez<sup>1</sup>, Benjamin Levine<sup>1</sup>, Cheryce Fischer<sup>1</sup>, Martin Allen-Auerbach<sup>3</sup>, Pawan Gupta<sup>3</sup>, Heidi Coy<sup>2</sup>, Bianca Villegas<sup>2</sup>, Matthew Brown<sup>1,2</sup> and Jonathan Goldin<sup>1,2</sup>

## Abstract

**Background:** To evaluate the anatomic site(s) of initial disease progression in patients with castration resistant metastatic prostate cancer (mCRPC) in the presence or absence of pre-treatment visceral metastases while on systemic therapy.

**Methods:** This is a retrospective cohort study of mCRPC patients who have baseline and at least one follow up bone scan and CT chest, abdomen and pelvis (CAP). Disease progression was determined by RECIST and/or  $\geq 30\%$  increase in automated bone scan lesion area score. Kaplan–Meier plot was used to estimate the median progression free survival and log-rank tests were used to compare anatomic sites.

**Results:** Of 203 patients, 61 (30%) had pre-treatment visceral metastases. Patients with baseline visceral disease were 1.5 times more likely to develop disease progression (HR = 1.53; 95% CI, 1.03–2.26). Disease progression was a result of worsening bone scan disease (42% (16/38)) versus visceral (32% (12/38)) or lymph node disease (3% (1/38)) by CT or a combination thereof (23% (9/38)). Median time to progression (TTP) did not differ by anatomic location of initial progression ( $p = 0.86$ ). Development of new lesions occurred in 50% of those visceral patients with soft tissue only progression and was associated with a significantly longer TTP (3.1 months (2.8–4.3 months) than those with worsening of pre-existing lesions (1.8 months (1.6–2.7 months));  $p = 0.04$ ).

**Conclusions:** Patients with pre-treatment visceral metastases in mCRPC are more likely to experience disease progression of bone disease with the initial anatomic site of progression similar to those without baseline visceral involvement.

**Keywords:** RECIST, Disease progression, Prostate cancer, Visceral metastases

## Background

Prostate cancer is the most common cancer diagnosed in men. In the setting of metastatic disease, androgen deprivation therapy is the initial treatment, however nearly all men eventually develop progressive disease; termed castration-resistant prostate cancer (mCRPC) [1, 2]. Clinical imaging, including radionuclide bone scan, computed

\*Correspondence: kruchalski@mednet.ucla.edu

<sup>1</sup> Department of Radiological Sciences, UCLA, Los Angeles, CA, USA  
Full list of author information is available at the end of the article



© The Author(s) 2022. **Open Access** This article is licensed under a Creative Commons Attribution 4.0 International License, which permits use, sharing, adaptation, distribution and reproduction in any medium or format, as long as you give appropriate credit to the original author(s) and the source, provide a link to the Creative Commons licence, and indicate if changes were made. The images or other third party material in this article are included in the article's Creative Commons licence, unless indicated otherwise in a credit line to the material. If material is not included in the article's Creative Commons licence and your intended use is not permitted by statutory regulation or exceeds the permitted use, you will need to obtain permission directly from the copyright holder. To view a copy of this licence, visit <http://creativecommons.org/licenses/by/4.0/>. The Creative Commons Public Domain Dedication waiver (<http://creativecommons.org/publicdomain/zero/1.0/>) applies to the data made available in this article, unless otherwise stated in a credit line to the data.

tomography (CT) and magnetic resonance imaging (MRI) are used to assess treatment response in mCRPC in clinical care and trials [3–5]. The combination of these imaging modalities are usually used side-by-side to assess prostate cancer metastases, including bone and soft tissue disease (lymph node, local recurrence and visceral lesions).

The majority, 80–90% of patients with mCRPC develop osseous metastases, while approximately 36% develop lymph node metastases and 20–30% visceral involvement [6–9]. Visceral metastases are defined as soft tissue lesions involving liver, lungs, adrenal glands, peritoneum, pleura, brain and dura [10]. Visceral metastases occur less commonly than bone disease and the significance of their presence is less well studied [11]. However the clinical implications of these visceral lesions should not be underestimated. Visceral metastases tend to occur later in the disease course, and patients with visceral involvement have a worse prognosis than those with bone-only disease [6, 9, 11, 12]. Prior studies have shown that liver involvement portends the shortest overall survival when compared to lung, lymph node and/or osseous involvement [6, 13, 14].

There are increasing numbers of treatment options for mCRPC with growing numbers of post docetaxel options [11, 15]. Even patients with visceral involvement may derive a clinical benefit to systemic therapy with improvements in progression free and overall survival with treatment [8, 6, 14]. However, the actual anatomic site of radiographic disease progression when visceral metastases are present is not well understood. It is unclear if worsening of these visceral lesions is the sole driver of time to progression or if other soft tissue and osseous metastases equally contribute to significantly increasing tumor burden. The purpose of this study is to evaluate the anatomic site(s) of initial disease progression when visceral metastases are present prior to treatment in mCRPC patients.

## Materials and methods

### Patients and study design

Written informed consent was waived in this institutional review board-approved; Health Insurance Portability and Accountability Act-compliant, retrospective analysis. Patients who met the inclusion criteria for this study were identified from an anonymized imaging clinical trial database of patients with mCRPC in which imaging was serially obtained as part of clinical trials evaluating cabozantinib a tyrosine receptor blocker for outcome assessment between 2009–2018. Patients were excluded if (a) there was no CT and/or MRI Chest Abdomen and Pelvis (CAP) imaging or Technetium (Tc-99) bone scan at baseline, (b) no follow up imaging. Patients were classified as having visceral or no visceral disease. Additional sites of soft tissue involvement were further

divided into the following anatomic sites: lymph node, local residual/recurrent disease, and soft tissue bone.

### Imaging acquisition

CT or MRI CAP and Tc-99 bone scan were performed at baseline and then every 6 weeks until radiographic progression or initiation of a subsequent anticancer therapy. Baseline and follow-up standard-of-care volumetric CT or MRI CAP studies were performed and reconstructed every 3–5 mm contiguously. Pre-contrast abdomen imaging as well as post contrast chest, abdomen and pelvis were performed unless intravenous contrast was contraindicated. A single phase (equilibrium phase) or dual phase (portal and equilibrium phase) of the abdomen and pelvis were obtained.

MRI studies were performed using a body coil with reconstruction every 3–5 mm without gap in the axial plane. Tc-99 whole body PA and AP bone scans were also acquired with 14–30 mCi ( $\pm 10\%$ ) of Methylene diphosphonate (MDP) and 2–4 h ( $\pm 30$  min) acquisition post injection.

### Tumor assessment

#### Soft tissue disease

Soft tissue tumor response was assessed at all time points per RECIST 1.0 or RECIST 1.1 prospectively with blinded independent centralized review by two readers with adjudication by another reviewer in cases of disagreement [16]. The independent review committee consisted of readers in full time academic practice with collective experiences in prostate cancer and were blinded to all patient and clinical information. The presence of soft tissue disease was defined as measurable or nonmeasurable lesions per RECIST, with measurable disease including  $\geq 10$  mm long axis for organ based disease and  $\geq 15$  mm short axis for lymph nodes. A sum of diameters for target lesions was calculated and reported at baseline. All other anatomic sites of soft tissue disease were identified as non-target at baseline, and were categorized as lymph node, local recurrence/residual disease, visceral disease or soft tissue bone [17, 18]. Per RECIST, progressive disease was defined by the sum of diameters of target lesions with relative increase of at least 20% and with an absolute increase in size by at least 5 mm. Development of one or more new lesions was also considered progressive disease. Non-target disease was qualitatively assessed for unequivocal worsening of total non-target tumor burden [17, 18].

#### Bone scans

Whole body Tc-99 PA and AP bone scans were analyzed using an algorithm that detects and measures the Bone Scan lesion area (BSLA) [19]. Two readers

**Table 1** Patient and lesion baseline characteristics

Characteristic (n = 203)	Total 203	Visceral involvement 61	No Visceral involvement 142	p-value
Number of follow-up CT CAP <sup>a</sup>	2.6 (1.9)	2.3 (1.9)	2.7 (1.9)	0.1786
Number of follow-up BSLA <sup>a</sup>	2.6 (2.0)	2.3 (1.9)	2.7 (2.0)	0.2193
Time to progression (months) <sup>b</sup>	4.4 (3.0–8.5)	3.2 (2.7–6.8)	4.5 (3.2–8.8)	0.0329
Number of patients with target lesion(s)	158	61	97	
Average no. target lesion(s) on baseline <sup>a</sup>	1.3 (1.5)	2.0 (1.6)	0.8 (1.3)	< 0.0001
Average no. non-target lesion(s) on baseline <sup>a</sup>	1.4 (1.0)	1.5 (1.2)	1.3 (0.8)	0.6527
BSLA score (mm <sup>2</sup> ) <sup>a</sup>	88,916 (77,103)	86,989 (80,005)	89,958 (76,088)	0.6786

<sup>a</sup> Data is the mean with standard deviation in parentheses

<sup>b</sup> Data is the median with interquartile in parentheses

independently reviewed the BSLA segmentation output in a locked sequential reading paradigm. Each lesion identified by computer-aided detection could be accepted, modified, or removed. Additional lesions could be added by the reader if needed. All readers were blinded to patients' clinical and biochemical status [20].

Bone disease progression was defined as a 30% or more increase in BSLA score or two or more new lesions in new locations when compared to baseline. Bone scan follow up was performed at 12 weeks to exclude any potential flare phenomenon [21].

### Statistical methods

Summary statistics for patient and lesion baseline characteristics were reported by visceral involvement groups. Wilcoxon rank sum tests were used to compare the difference between the baseline characteristics in those patients with visceral involvement and no visceral involvement. Frequencies and percentages were reported for baseline anatomic site of disease at the patient and lesion level by visceral involvement. Chi-squared test was used to compare the association in subjects with anatomic site of disease progression and visceral involvement. Kaplan–Meier plot was used to estimate the median time to progression in the anatomic sites of disease progression and log-rank tests were used to compare anatomic sites. Cox proportional models were used to estimate hazard ratio and 95% confidence interval. P values of less than 0.05 were regarded as statistically significant. All statistical analysis was performed using Stata (version 14.2; StatCorp, College Station, Tx).

## Results

### Patients and imaging

Of the original 322 patients, 67 patients were excluded due to lack of baseline imaging and 52 patients were excluded due to lack of imaging after baseline

studies. (Fig. 1). Therefore, for this exploratory analysis 203 patients with a mean age of 70 years (standard deviation (SD)  $8.5 \pm 10.0$ ) were included. From this total cohort, 61 men had visceral metastases present on pre treatment baseline CAP imaging, and 142 had no visceral lesions present (Table 1). The mean number of follow-up visits was 2.6 CT CAPs (SD  $\pm 1.9$ ) and 2.6 bone scans (SD  $\pm 2.0$ ) for all 203 patients and was not significantly different when comparing those with or without visceral disease ( $p = 0.18$  for CT CAPs and  $p = 0.22$  for bone scan).

### Imaging of metastases at baseline

#### Bone scan disease

Baseline total osseous tumor burden by bone scan was not statistically different amongst those with and those without visceral disease; with BSLA score of 86,989 mm<sup>2</sup> in visceral and 89,958 mm<sup>2</sup> in non-visceral patients ( $p = 0.68$ ).

**Table 2** Anatomic sites of soft tissue metastases: Lesion level evaluation

Anatomic site of disease	Visceral involvement (n, %)	No Visceral involvement (n, %)
Total	126	120
Bone soft tissue	17 (13.5)	56 (46.7)
Local residual/recurrent disease	2 (1.6)	4 (3.3)
Lymph Node	34 (27.0)	60 (50.0)
Visceral disease	73 (57.9)	0
-Liver	33 (26.2)	0
-Lung	22 (17.5)	0
-Adrenal	12 (9.5)	0
-Spleen	2 (1.6)	0
-Peritoneal nodule	1 (0.8)	0
-Pleura	1 (0.8)	0
-Kidney	2 (1.6)	0

**Table 3** Baseline imaging characteristics: anatomic distribution of disease by patient

Anatomic sites of metastases	Visceral involvement (n, %)	No Visceral involvement (n, %)
<b>Total patients</b>	61 (30.1)	142 (70.0)
Bone only (BSLA and/or soft tissue bone)	0	80 (39.4)
<b>Bone and lymph node</b>	0	57 (28.1)
<b>Bone and local recurrence</b>	0	1 (0.5)
<b>Bone, lymph node and local recurrence</b>	0	3 (1.5)
<b>Bone and visceral disease</b>	27 (13.3)	0
<b>Bone, lymph node and visceral</b>	31 (15.3)	0
<b>Bone, lymph node, local recurrence and visceral disease</b>	2 (1.0)	0
<b>Visceral disease and lymph node</b>	1 (0.5)	0

**Soft tissue disease**

On average, patients with visceral involvement had 2 soft tissue lesions identified as measurable disease at baseline CT. Additional anatomic sites of disease involvement which did not meet measurable criteria were denoted as non-target lesions. Number of non-target lesions was similar amongst those with and without visceral involvement (1.5 non-target sites versus 1.3 non-target sites).

In those 61 patients with baseline soft tissue disease, there were 126 target lesions and/or non-target lesions (Table 2). Of these, 59% (73/126) were visceral metastases; with the most common in the liver (26% (33/126)), lung

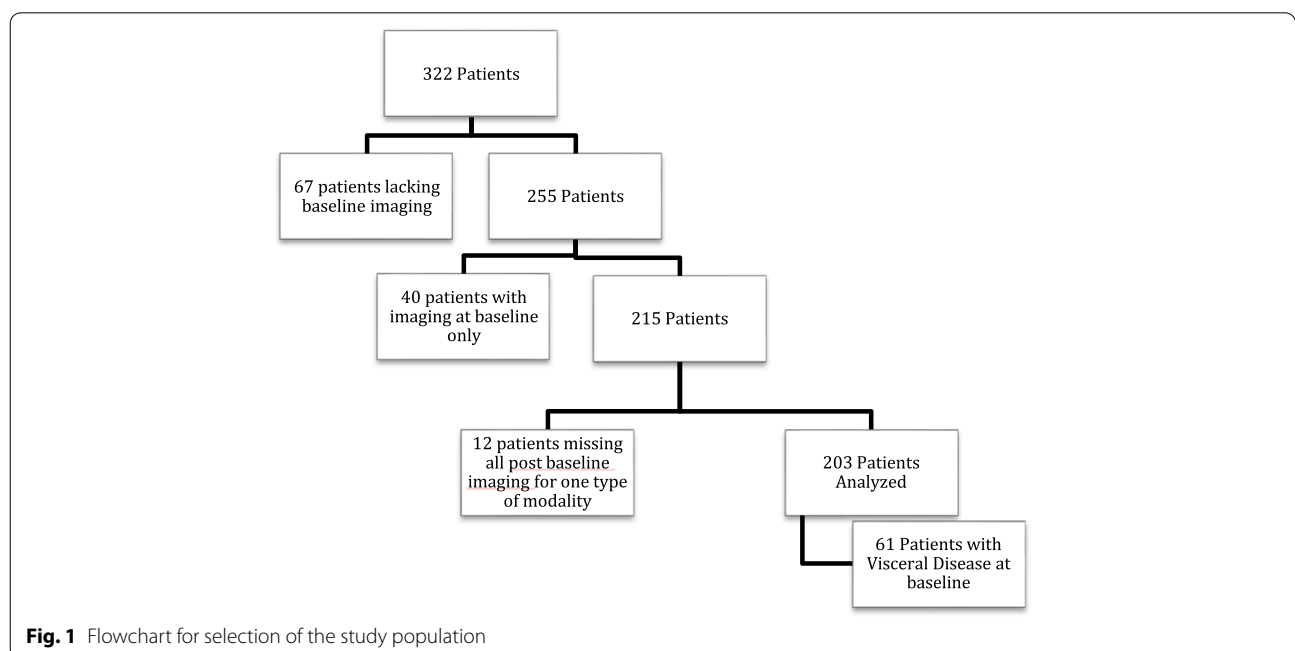
(18% (22/126)), and adrenal glands (12% (12/126)). In addition to sites of visceral disease, bone lesions with soft tissue components, lymph nodes, and local residual/recurrent disease were also present in 14% (17/126), 27% (34/126), and 2% (2/126) of these subjects. In those subjects without baseline visceral disease, soft tissue lesions were identified in bone 47% (56/120), lymph nodes 50% (60/120) and as local residual/recurrent disease 3% (4/120).

Nearly all patients with visceral disease also had concomitant bone metastases (Table 3). This included 44% (27/61) patients with bone and visceral disease, 51% (31/203) bone, visceral and lymph node disease, and 3% (2/203) with bone, lymph node, visceral disease and local recurrence. One patient with baseline visceral involvement lacked concurrent osseous disease but did have nodal metastasis.

In those patients without baseline visceral involvement, 56% (80/142) had osseous involvement only. An additional 40% (57/142) patients had a combination of bone and lymph node involvement, while 2% (3/142) had bone, lymph node and local recurrence and 0.7% (1/142) had bone and local recurrence.

**Evaluation of progression events**

Patients with baseline visceral disease had a significantly shorter time to progression than those without (3.2 versus 4.5 months,  $p = 0.04$ ) (Fig. 1). Initial disease progression was due solely to worsening bone disease by BSLA in 42% (16/38) of patients (Table 4, Fig. 2). For 22 patients, disease progression was due to worsening soft tissue disease only and as a result of progressive



**Fig. 1** Flowchart for selection of the study population

**Table 4** Initial source for disease progression: By anatomic site

Anatomic site of disease progression	Number of patients (n (%))		p-value
	Visceral involvement	No visceral involvement	
Bone (BSLA only)	16 (42.1)	43 (58.9)	0.006
Visceral disease	12 (31.6)	9 (12.3)	
Lymph node	1 (2.6)	12 (16.4)	
Multiple sites*	9 (23.7)	9 (12.3)	

\* Multiple sites: initial disease progression by RECIST which involves more than one type of anatomic site or simultaneous progression by RECIST and BSLA

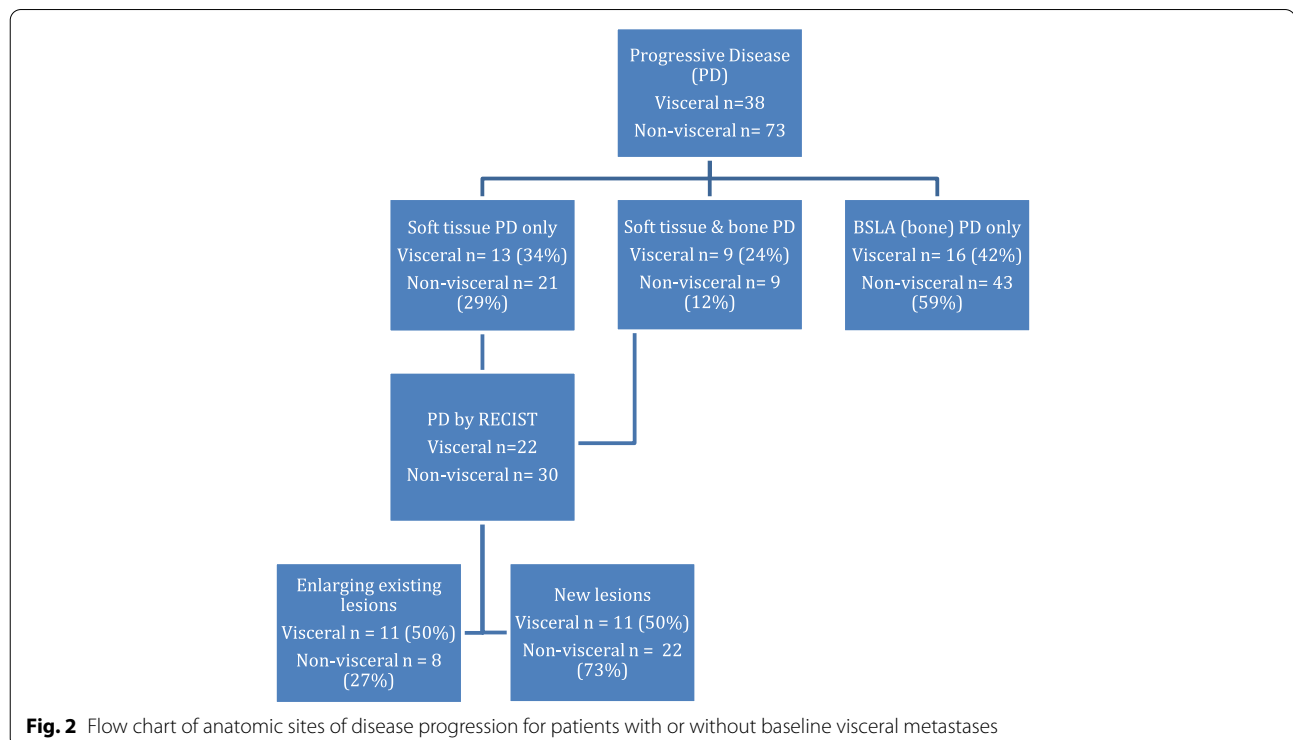
lymph nodes only 3% (1/38) or visceral disease 32% (12/38). For 24% (9/38) of patients, progressive disease occurred simultaneously in both, bone scan disease and soft tissue locations.

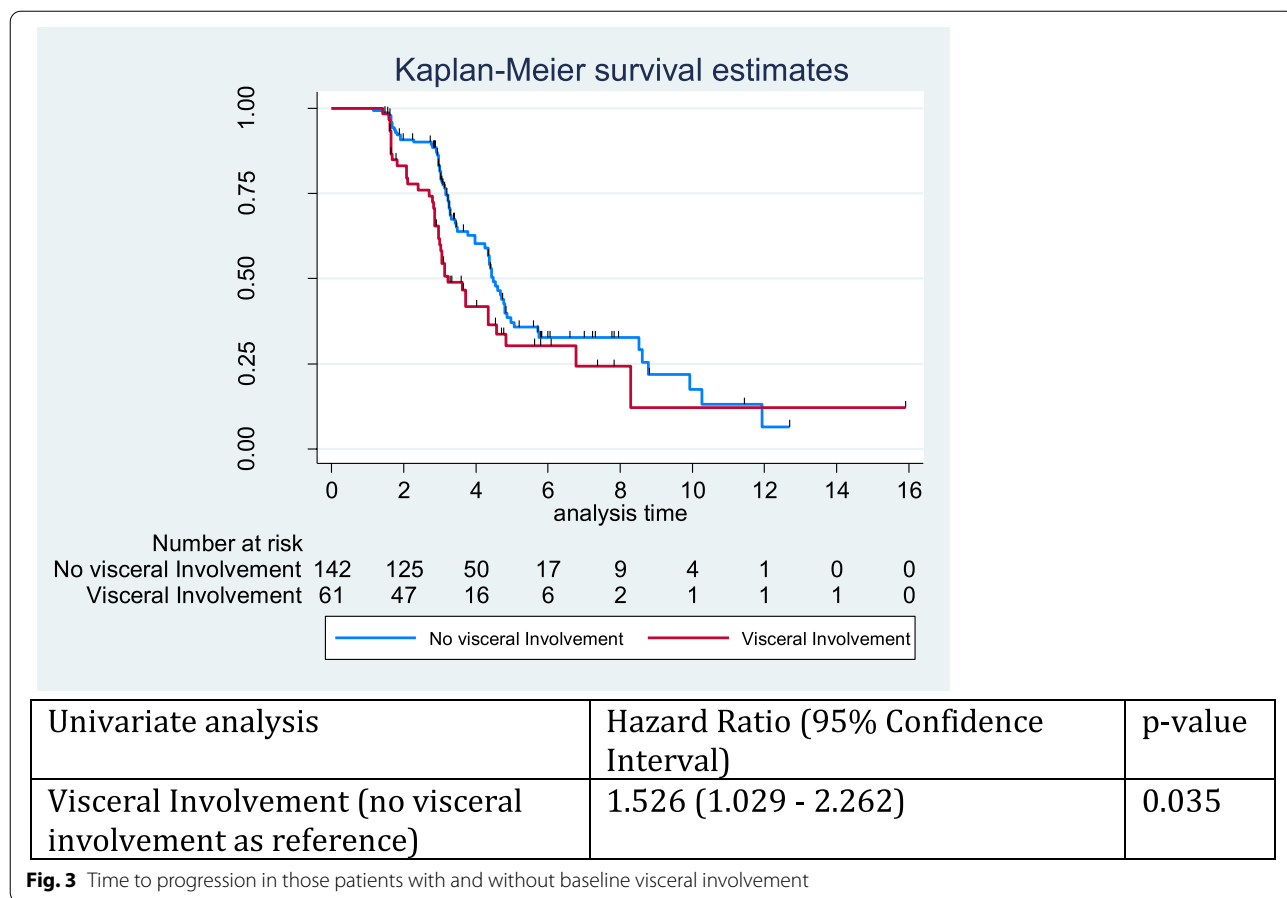
In patients without baseline visceral disease, worsening of bone scan disease was also the most common cause of disease progression, occurring in 59% (43/73) of patients. Disease progression as a result of new or enlarging lymph node(s) occurred in 16% (12/73) patients, while new visceral disease was noted in 12% (9/73) patients.

Patients with pre-treatment visceral disease were 1.5 times more likely to develop disease progression than those without baseline visceral involvement (HR = 1.53; 95% CI, 1.029–2.262) (Fig. 3). However time to progression was not statistically different when stratifying by

initial anatomic site of disease progression, including bone, visceral, lymph node or multiple sites in either those patients with ( $p=0.86$ ) and without ( $p=0.40$ ) baseline visceral disease (Table 5).

Soft tissue only disease progression occurred in 22 patients with baseline visceral lesions and 30 patients without pretreatment visceral metastases (Table 6). New lesions occurred in 50% (11/22) and 73% (22/30) of these patients with and without visceral involvement, respectively. Of those patients with pre-treatment visceral disease, progression due to presence of new lesions was associated with a significantly longer time to progression (3.1 months (2.8–4.3 months) than those with worsening of pre-existing lesions (1.8 months (1.6–2.7 months;  $p=0.044$ ).

**Fig. 2** Flow chart of anatomic sites of disease progression for patients with or without baseline visceral metastases



**Table 5** Initial source for disease progression: time to progression

TTP (months) **	Anatomic site of disease progression				p-value
	Bone (BSLA only)	Visceral disease	Lymph node	Multiple sites*	
Visceral involvement	3.0 (2.1–3.6)	2.8 (1.6–3.1)	3.1	2.1 (1.6–3.2)	0.8639
No visceral involvement	3.3 (2.9–4.4)	4.2 (3.3–4.9)	3.0 (1.6–4.4)	3.2 (3.0–4.4)	0.3968

\* Multiple sites: initial disease progression by RECIST which involves more than one type of anatomic site or simultaneous progression by RECIST and BSLA

ª Data is the median with interquartile in parentheses

TTP Time to progression

**Table 6** Initial source for RECIST only disease progression

Lesion type for PD	Visceral involvement		No visceral involvement	
	Number of patients (n (%))	TTP (months)	Number of patients (n (%))	TTP (months)
Enlarging existing lesion(s)	11 (50.0)	1.8 (1.6–2.7)	8 (26.7)	3.0 (1.6–4.5)
Presence of new lesions(s)	11 (50.0)	3.1 (2.8–4.3)	22 (73.3)	3.8 (3.0–4.8)
-multiple sites*	1 (4.5)	4.3	7 (23.3)	3.2 (3.0–4.4)
-lymph node	1 (4.5)	3.1	6 (20.0)	1.9 (1.8–4.4)
-visceral	9 (40.9)	3.0 (2.8–3.1)	9 (30.0)	4.2 (3.3–4.9)

\* Multiple sites: initial disease progression by RECIST which involves more than one type of anatomic site or simultaneous progression by RECIST and BSLA

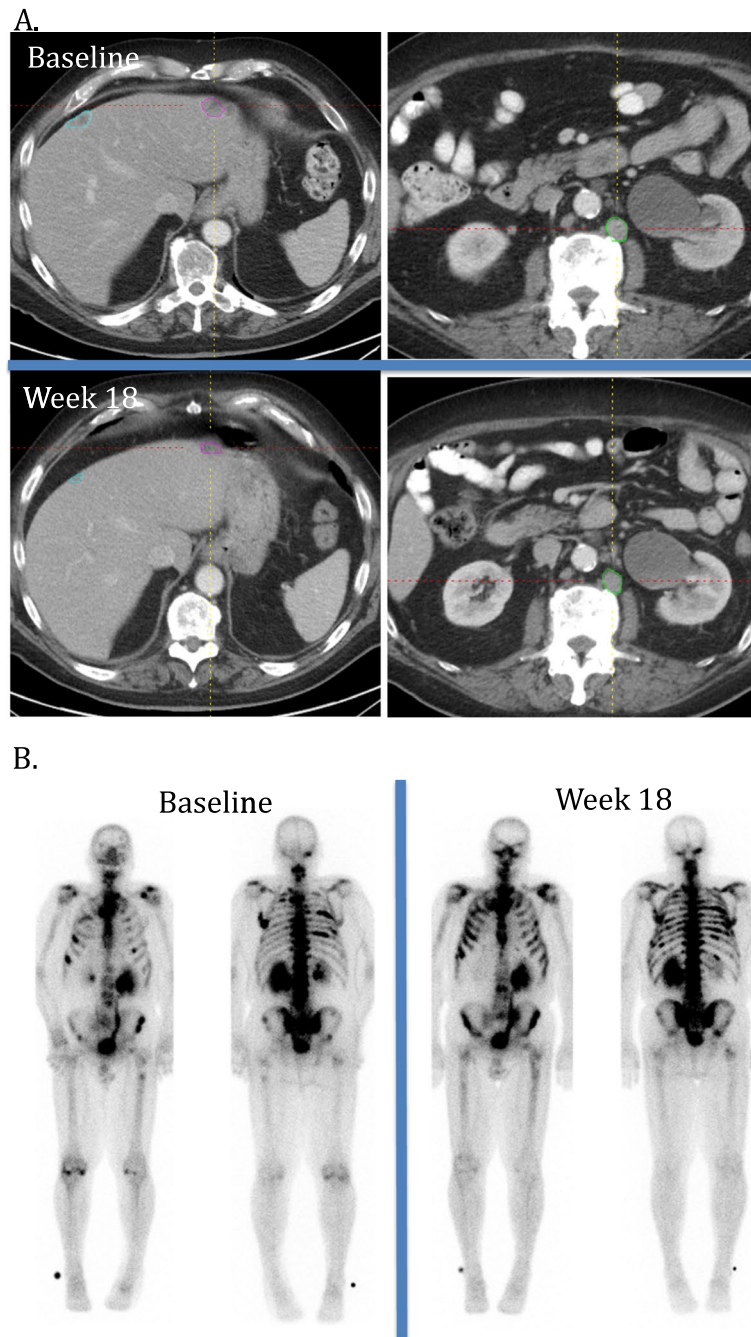
TTP Time to progression

## Discussion

While there have been multiple prior studies characterizing the predictive and prognostic role of mCRPC visceral metastases, this is the first study to our knowledge that investigates how the anatomic sites of this disease burden

individually contribute to radiographic disease progression overall.

Metastatic prostate cancer is known to have high inter- and intra- patient tumor heterogeneity with respect to site, that may impact treatment outcome [22–24]. There



**Fig. 4** Example case: Baseline visceral disease with worsening disease by BSLA bone scan only as source of disease progression. **A.** Axial CT of the abdomen at baseline and week 18. Soft tissue target lesions at baseline include liver (blue and pink circles) and retroperitoneal lymph node (green circle) and were stable and slightly smaller at week 18. **B.** AP and PA Tc-99 bone scans were also performed at baseline and week 18. Multiple bone lesions are present at baseline, with increased and new lesions involving ribs bilaterally and right pelvis at week 18

is both heterogeneity at baseline as well as during follow up with respect to site of progressive disease and new lesion development. Therefore, multimodality imaging to separately assess soft tissue disease and bone disease is usually combined to provide a single response to therapy (Fig. 4) [3, 24]. In our study the presence of visceral disease at baseline was associated with an increased risk of disease progression by either RECIST or bone scan assessment and a shorter time to progression. As a cause of disease progression, soft tissue progression was seen in both those with and without visceral involvement at baseline. New lesions occurred in 50% (11/22) and 73% (22/30) of these patients with and without visceral involvement, respectively. Of those patients with pre-treatment visceral disease, progression due to presence of new lesions was associated with a significantly longer time to progression (3.1 months (2.8–4.3 months) than those with worsening of pre-existing lesions (1.8 months (1.6–2.7 months;  $p = 0.044$ ).

In our cohort, the presence of visceral disease was the main differentiating baseline imaging factor given that baseline bone scan disease burden was the same in those with and without pre-treatment visceral metastases. Even so, in patients with pre-treatment visceral disease, disease progression solely by worsening bone involvement occurred most often. While visceral lesions portend a poorer prognosis, they do not necessarily represent the site of worsening disease at the time of disease progression. Future work is required to further evaluate if visceral metastases themselves are predictors of poorer prognosis or are only a surrogate marker of larger baseline tumor burden. Larger pretreatment tumor burdens have also been previously shown in prostate cancer and other tumor types to portend poorer survival [25–27].

We note the following limitations. First, our analysis was limited to a retrospective analysis of prospectively interpreted images obtained from an anonymized imaging database. Second, during the original image review the independent review committee was blinded to clinical information during image interpretation, which may have limited how the qualitative component of non-target lesion progression was interpreted. Third, this study included only bone scan and CT/MRI chest, abdomen and pelvis. It should be noted that advances in next generation imaging, including whole body MRI and PET/CT with tracers targeting PSMA (PSMA PET/CT) may lead to new insights into the role visceral and bone metastases play in disease progression [28]. PSMA PET/CT can identify soft tissue disease not seen with anatomical imaging (e.g. metastatic nodes that are not pathologically enlarged) or bone scanning (bone metastases that have not elicited a sclerotic response), thus improving accuracy in prostate cancer staging and detection of

metastases [29–31]. Similarly whole body MRI can provide both, anatomical and functional information in the setting of bone metastases, thus overcoming risk of flare phenomenon [23]. However these modalities are not yet commonly implemented into prospective drug therapeutic trials to be included in a similar analysis with respect to role of visceral metastases. Future use of PSMA PET/CT in therapeutic clinical trials and improved metastasis detection could lead to alterations in the prevalence of visceral metastases and better assess their role in disease progression.

## Conclusions

With ongoing advancements in therapies available for mCRPC, the development of mCRPC visceral metastases during a patient's cancer treatment could theoretically continue to become more commonplace [11]. In this study, patients with pre-treatment visceral metastases were more likely to experience disease progression of bone disease, with this initial anatomic site of progression similar to those without baseline visceral involvement. Continued improved understanding of the role of mCRPC visceral lesions in patient outcomes will assist in treatment decisions for those patients with visceral metastases.

## Abbreviations

BSLA: Bone scan lesion area; CAP: Chest, abdomen and pelvis; CT: Computed tomography; mCRPC: Metastatic castration resistant prostate cancer; MDP: Methylene diphosphonate; MRI: Magnetic resonance imaging; PET: Positron emission tomography; PSMA: Prostate-specific membrane antigen; RECIST: Response evaluation criteria in solid tumors; Tc-99: Technetium; TTP: Time to progression.

## Acknowledgements

We thank UCLA Center for Computer Vision and Imaging Biomarkers for resources and funding for this project.

## Authors' contributions

All authors have approved the submitted version and have agreed to be personally accountable for the author's own contributions and to investigate any questions regarding accuracy or integrity of the work. KR, MD, SR, MP, VS, AG, BJ, CF, MA, PG all contributed to imaging interpretation for the study. HC and BV assisted with data collection. BV and GK performed statistical analyses. KR and JG both had major contributions in writing the manuscript.

## Funding

Not applicable.

## Availability of data and materials

This data is currently in a research database which is not publically available.

## Declarations

### Ethics approval and consent to participate

Institutional review board approval was waived for this retrospective evaluation by the institutional review committee, IRB#21–000658. Verbal and written informed consent were waived due to the retrospective nature of the study.



**Consent to publication**

Not applicable.

**Competing interests**

No known financial or nonfinancial competing interests.

**Author details**

<sup>1</sup>Department of Radiological Sciences, UCLA, Los Angeles, CA, USA. <sup>2</sup>UCLA Center for Computer Vision and Imaging Biomarkers, Los Angeles, CA, USA. <sup>3</sup>Ahmanson Translational Theranostics Division, Department of Molecular & Medical Pharmacology, University of California Los Angeles, Los Angeles, CA, USA.

Received: 15 February 2022 Accepted: 21 June 2022

Published online: 14 July 2022

**References**

- Saad F, Hotte SJ. Guidelines for the management of castrate-resistant prostate cancer. *Can Urol Assoc J*. 2010;4(6):380–4.
- Howlader N, Noone AM, Krapcho M, Miller D, Brest A, Yu M, Ruhl J, Tatalovich Z, Mariotto A, Lewis DR, Chen HS, Feuer EJ, Cronin KA (eds). SEER Cancer Statistics Review, 1975–2016, National Cancer Institute. Bethesda, MD, [https://seer.cancer.gov/csr/1975\\_2016/](https://seer.cancer.gov/csr/1975_2016/), based on November 2018 SEER data submission, posted to the SEER web site, April 2019.
- Scher HI, Morris MJ, Stadler WM, Higano C, Basch E, Fizazi K, et al. Trial design and objectives for castration-resistant prostate cancer: updated recommendations from the prostate cancer clinical trials working group 3. *Int J Clin Oncol*. 2016;34(12):1402–18.
- Perez-Lopez R, Tunariu N, Padhani AR, Oyen WJG, Fanti S, Vargas HA, et al. Imaging diagnosis and follow-up of advanced prostate cancer: clinical perspectives and state of the art. *Radiology*. 2019;292(2):273–86.
- Thana M, Wood LA. Followup imaging studies in metastatic castration-resistant prostate cancer: an individualized approach. *Can Urol Assoc J*. 2019;13(6):201–2.
- Halabi S, Kelly WK, Ma H, Zhou H, Solomon NC, Fizazi K, et al. Meta-analysis evaluating the impact of site of metastasis on overall survival in men with castration-resistant prostate cancer. *J Clin Oncol*. 2016;34(14):1652–9.
- Scher HI, Halabi S, Tannock I, Morris M, Sternberg CN, Carducci MA, et al. Design and end points of clinical trials for patients with progressive prostate cancer and castrate levels of testosterone: recommendations of the prostate cancer clinical trials working group. *J Clin Oncol*. 2008;26(7):1148–59.
- Loriot Y, Fizazi K, de Bono JS, Forer D, Hirmand M, Scher HI. Enzalutamide in castration-resistant prostate cancer patients with visceral disease in the liver and/or lung: outcomes from the randomized controlled phase 3 AFFIRM trial. *Cancer*. 2017;123(2):253–62.
- Whitney CA, Howard LE, Posadas EM, Amling CL, Aronson WJ, Cooperberg MR, et al. In Men with Castration-Resistant Prostate Cancer, Visceral Metastases Predict Shorter Overall Survival: What Predicts Visceral Metastases? Results from the SEARCH Database. *Eur Urol Focus*. 2017;3(4-5):480–6.
- Pezaro C, Omlin A, Lorente D, Rodrigues DN, Ferraldeschi R, Bianchini D, et al. Visceral disease in castration-resistant prostate cancer. *Eur Urol*. 2014;65(2):270–3.
- Drake CG. Visceral metastases and prostate cancer treatment: 'die hard', 'tough neighborhoods', or 'evil humors'? *Oncology (Williston Park)*. 2014;28(11):974–80.
- Pezaro CJ, Omlin A, Lorente D, Nava Rodrigues D, Ferraldeschi R, Bianchini D, et al. Visceral disease in castration-resistant prostate cancer. *Eur Urol*. 2014;65(2):270–3.
- Albala DM. Imaging and treatment recommendations in patients with castrate-resistant prostate cancer. *Rev Urol*. 2017;19(3):200–2.
- Armstrong AJ, Garrett-Mayer ES, Yang Y-CO, de Wit R, Tannock IF, Eisenberger M. Contemporary prognostic nomogram for men with hormone-refractory metastatic prostate cancer: a tax327 study analysis. *Clin Cancer Res*. 2007;13(21):6396–403.
- Teo MY, Rathkopf DE, Kantoff P. Treatment of advanced prostate cancer. *Annu Rev Med*. 2019;70:479–99.
- U.S. Department of Health and Human Services, U.S. Food and Drug Administration. Developing Medical Imaging Drug and Biological Products Part 3: Design, Analysis, and Interpretation of Clinical Studies. (FDA-1998-D-0035), 2004.
- Eisenhauer EA, Therasse P, Bogaerts J, Schwartz LH, Sargent D, Ford R, et al. New response evaluation criteria in solid tumours: Revised RECIST guideline (version 1.1). *Eur J Cancer*. 2009;45(2):228–47.
- Therasse P, Arbuck SG, Eisenhauer EA, Wanders J, Kaplan RS, Rubinstein L, et al. New guidelines to evaluate the response to treatment in solid tumors. European organization for research and treatment of cancer, national cancer institute of the United States, national cancer institute of Canada. *J Natl Cancer Inst*. 2000;92(3):205–16.
- Brown M, Kim G, Chu GH, Ramakrishna B, Allen-Auerbach M, Fischer CP, Levine B, Gupta PK, Schiepers CW, Goldin JG. Quantitative bone scan lesion area as an early surrogate outcome measure indicative of overall survival in metastatic prostate cancer. *J Med Imaging*. 2018;5(1):011017.
- Smith MR, Sweeney CJ, Corn PG, Rathkopf DE, Smith DC, Hussain M, et al. Cabozantinib in chemotherapy-pretreated metastatic castration-resistant prostate cancer: results of a phase II nonrandomized expansion study. *J Clin Oncol*. 2014;32(30):3391–9.
- Anand A, Bjartell A, Danila DC, Martinez DF, Edenbrandt L, Larson SM, et al. Translating prostate cancer working group 2 (PCWG2) progression criteria into a quantitative response biomarker in metastatic castration-resistant prostate cancer (mCRPC). *J Clin Oncol*. 2017;35(6\_suppl):170.
- Wei L, Wang J, Lampert E, Schlanger S, DePriest AD, Hu Q, et al. Intratumoral and Intertumoral Genomic Heterogeneity of Multifocal Localized Prostate Cancer Impacts Molecular Classifications and Genomic Prognosticators. *Eur Urol*. 2017;71(2):183–92.
- Perez-Lopez R, Tunariu N, Padhani AR, Oyen WJG, Fanti S, Vargas HA, et al. Imaging Diagnosis and Follow-up of Advanced Prostate Cancer: Clinical Perspectives and State of the Art. *Radiology*. 2019;292(2):273–86.
- Etten JLV, Dehm SM. Clonal origin and spread of metastatic prostate cancer. *Endocr Relat Cancer*. 2016;23(4):R207.
- Cornford P, van den Bergh RCN, Briers E, Van den Broeck T, Cumberbatch MG, De Santis M, et al. EAU-EANM-ESTRO-ESUR-SIOG Guidelines on Prostate Cancer. Part II-2020 Update: Treatment of Relapsing and Metastatic Prostate Cancer. *Eur Urol*. 2021;79(2):263–82.
- Iacovelli R, Lanoy E, Albiges L, Escudier B. Tumour burden is an independent prognostic factor in metastatic renal cell carcinoma. *BJU Int*. 2012;110(11):1747–53.
- Jagannath S, Velasquez WS, Tucker SL, Fuller LM, McLaughlin PW, Manning JT, et al. Tumor burden assessment and its implication for a prognostic model in advanced diffuse large-cell lymphoma. *J Clin Oncol*. 1986;4(6):859–65.
- Schöder H, Hope TA, Knopp M, Kelly WK, Michalski JM, Lerner SP, et al. Considerations on Integrating Prostate-Specific Membrane Antigen Positron Emission Tomography Imaging Into Clinical Prostate Cancer Trials by National Clinical Trials Network Cooperative Groups. *J Clin Oncol*. 2022;40(13):1500–1505. <https://doi.org/10.1200/JCO.21.02440>.
- Hofman MS, Hicks RJ, Maurer T, Eiber M. Prostate-specific Membrane Antigen PET: Clinical Utility in Prostate Cancer, Normal Patterns, Pearls, and Pitfalls. *Radiographics*. 2018;38(1):200–17.
- Hofman MS, Lawrentschuk N, Francis RJ, Tang C, Vela I, Thomas P, et al. Prostate-specific membrane antigen PET-CT in patients with high-risk prostate cancer before curative-intent surgery or radiotherapy (proPSMA): a prospective, randomised, multicentre study. *Lancet*. 2020;395(10231):1208–16.
- Killock D. PSMA PET-CT improves staging. *Nat Rev Clin Oncol*. 2020;17(6):337.

**Publisher's Note**

Springer Nature remains neutral with regard to jurisdictional claims in published maps and institutional affiliations.